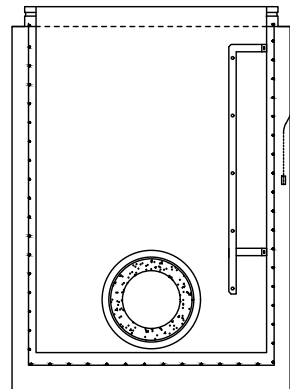
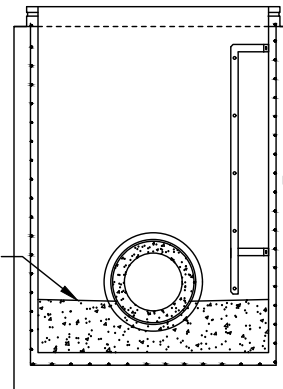


## Cunettes

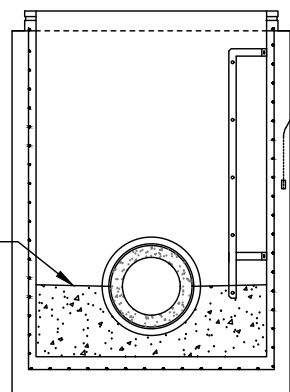


Cunette A



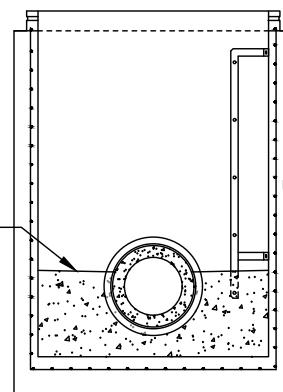
Pente 2%

Cunette "B"  
1/6 Ø de sortie



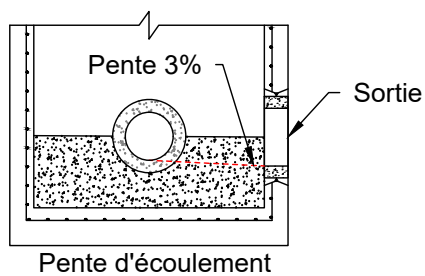
Pente 2%

Cunette "C"  
1/2 Ø de sortie



Pente 2%

Cunette "D"  
3/4 Ø de sortie

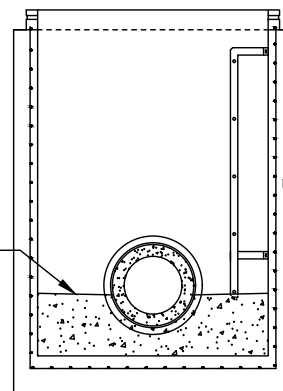


Pente 3%

Sortie

Pente d'écoulement

Pente 2%



Cunette "E"  
1/3 Ø de sortie

### Notes :

- Cunette disponible pour des regards de 900mmØ à 2400mmØ
- Fabriqués conformément à la norme BNQ 2622-420
- Il est fortement recommandé d'utiliser le lubrifiant approuvé et disponible chez Fortier - Tuvico<sup>MC</sup>.

