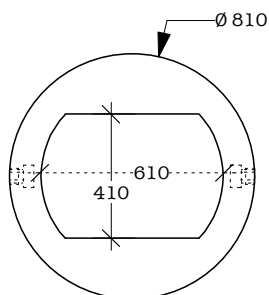
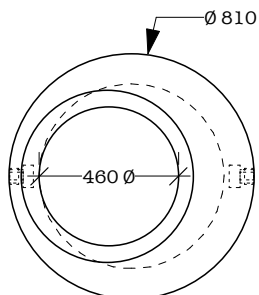
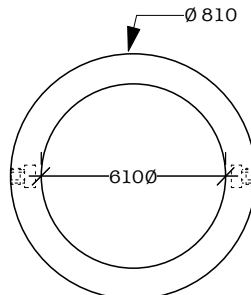


PUISARD 600Ø


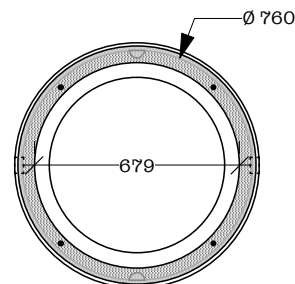
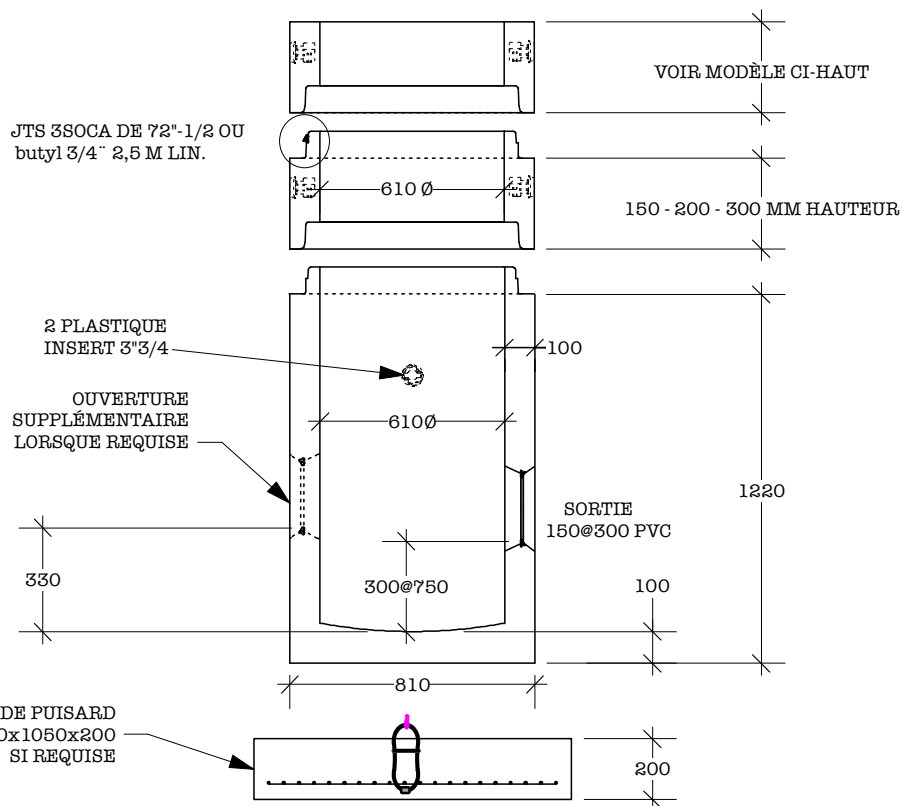
TÊTE 600Øx(610x410)



TÊTE 600Øx(460Ø)



TÊTE 600Øx(610Ø)


 TÊTE 600Øx(750Ø)
 CADRE INTÉGRÉ


Notes : Fabriqué conformément à la norme BNQ. 2622-420.
 Il est fortement recommandé d'utiliser le lubrifiant approuvé et disponible chez Tuvico.